

S611

Periurban infrastructure

Laurent Didier, Mathieu Le Ny and Louis Leger

BAST Architects

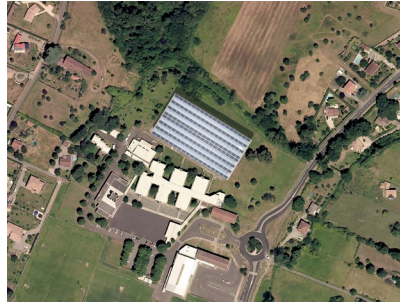
ENSA Toulouse (France)

Our practice within BAST is committed to «ordinary contexts» and «programs devoid of architecture» in rural or peri-urban areas, such as clubhouses, refectories, communal homes, multiservice centers, municipal workshops, extensions of town halls. Because we continuously question the use of material resources, programmatic recurrences, innovation and the economy that govern the act of building nowadays, we consider that these architectures can serve the production of commons. We ran a studio with 24 bachelor students of ENSA Toulouse in 2020, which aim was to design a small equipment based on a real program while developing a constructive system of its own. The proposals are simple and pragmatic constructions tolerating small budgets and seeking to enhance contemporary artisanal or industrial know-how.

The relatively small scale of the projects allows to manipulate different design tools and representation techniques. Orthophotography is used as «impartial» realistic photocollages. Isometric axonometries provide a graphic synthesis of plan, section and elevation. Real size prototypes are constructed to anticipate the construction and to test their constructive implications of the materials.

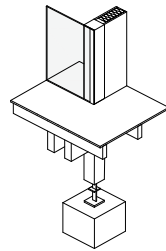
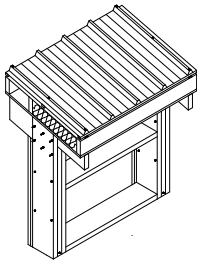
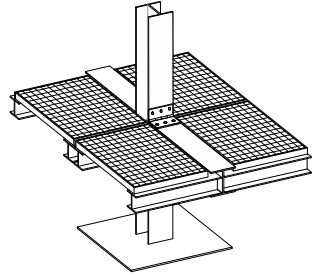
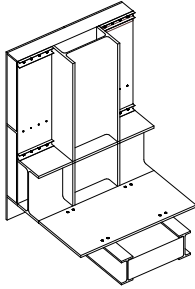
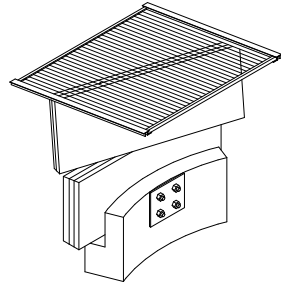
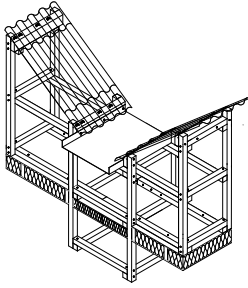
The following pages contain these documents realised during the studio at ENSA Toulouse, together with work of the practice at BAST. The identical canvas blurs the borders between practice and pedagogy, showing their mutual intrication.

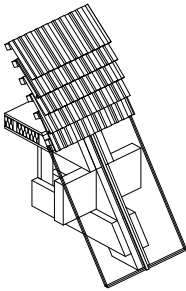
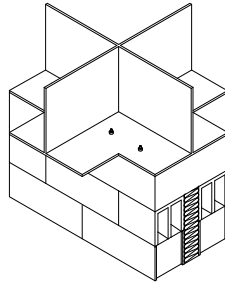
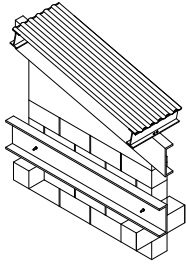
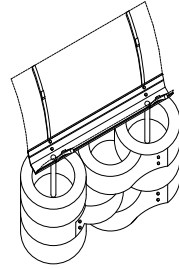
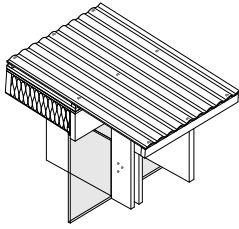




- halting area for travellers
- area for car sharing
- municipal workshops
- nautical base
- bakery
- campsite
- club house
- municipal recycling center
- bus station
- covered hall
- production unit

S611





wooden three-dimensional structure
 wooden beam network
 metal framework
 metal frame
 wooden frame
 wooden post and beam
 half wooden portal frame
 earth ship tyres
 masonry
 coffered metal ceiling
 wooden frame





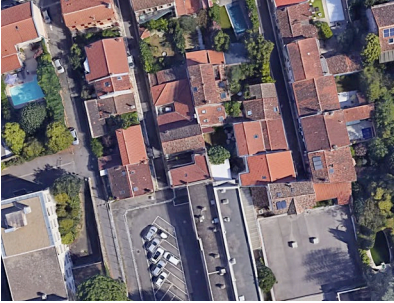
assembling wood
drilling to anchor
assembling wood
cutting tire
welding steel profile
welding steel profile
cuting cement blocs
cuting steel plate
assembling wood
assembling wood
fixing roof tiles

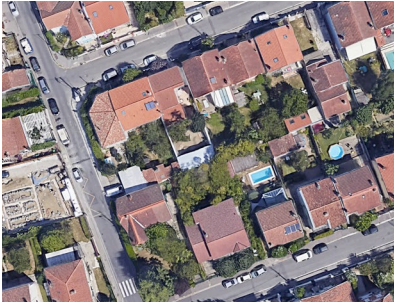


S611

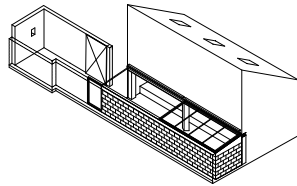
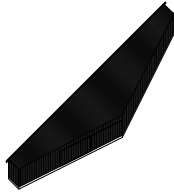
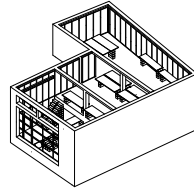
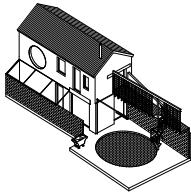
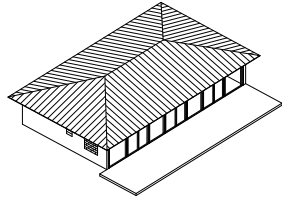
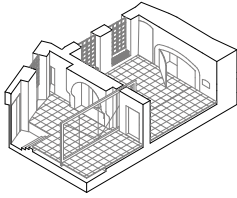


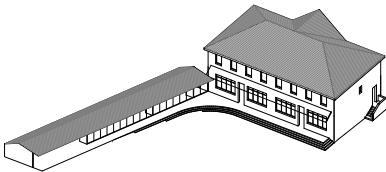
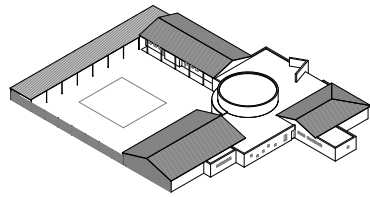
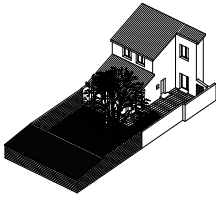
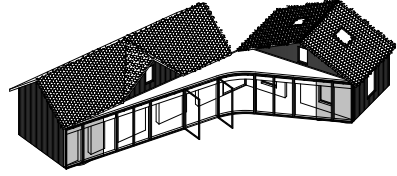
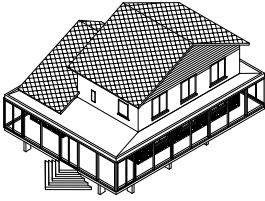
douglas fir battens 40x40
LVL spruce 75x450
IPE 500 + 320
IPE 120 + 80
LVL spruce 50x250
douglas solid wood 160x160 + 160x400
LVL spruce 50x200
16 inch tires
concrete block 20 + UPN 320
concrete block 20 + IPE 1750
glued laminated timber 120x320 + 140x440





- T09- Photographer studio
- M27- House refurbishment
- M23- House extension
- M26- House extension
- M24- House refurbishment
- T12- Offices
- M21- Dependance
- E37- School yard
- E23- Club house
- M20- House extension
- E26- School refectory





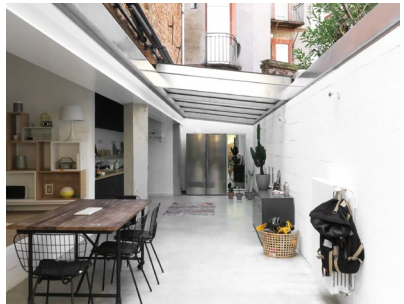
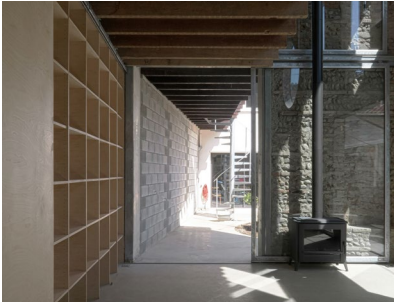
- T09- steel fame
- M27- wooden frame
- M23- wooden frame and steel pilars
- M26- wooden frame
- M24- steel beams and pilars
- T12- wodden frames
- M21- steel frames
- E37- steel frames
- E23- wooden frames
- M20- steel structure
- E26- clt wooden w



S611



- T09- steel frame
- M27- wooden frame
- M23- wooden frame and steel pilars
- M26- wooden frame
- M24- steel beams and pilars
- T12- wooden frames
- M21- steel frames
- E37- steel frames
- E23- wooden frames
- M20- steel structure
- E26- clt wooden structure



S611



- T09
- M27
- M23
- M26
- M24
- T12
- M21
- E37
- E23
- M20
- E26

Practices in Research #02 - Tour d'Horizon - May 2021

online open access double-blind peer-reviewed journal for practice-based research in architecture.

edited by

Benoît Burquel (ULB); Benoît Vandembulcke (ULiège); Harold Fallon (KU Leuven)

scientific committee

Georges Pirson (ULB); Julie Neuwels (ULiège); Pauline Lefebvre (ULB); Rolf Hughes (KU Leuven); Iwan Strauven (ULB); Robin Schaeverbeke (KU Leuven); Harold Fallon (AgwA & KU Leuven); Céline Bodart (ENSA Paris La Villette); Benoît Vandembulcke (AgwA & ULiège); Cécile Chanvillard (A Practice & UCLouvain); Asli Çiçek (Asli Çiçek & U Hasselt); Caroline Voet (Voet Architectuur & KU Leuven); Lisa De Visscher (A+ Architecture in Belgium & ULiège)

double-blind peer review process : www.architectureinpractice.eu/pirjournal

front and back cover images : BAST + ENSA Toulouse

thanks to Orfée Grandhomme & Ismaël Bennani

Practices in Research is published under a Creative Commons Attribution-ShareAlike 4.0 International License and fulfils the DOAJ definition of open access. Practices in Research provides immediate Open Access to its content on the principle that making research freely available to the public supports a greater global exchange of knowledge. Copyright for articles published in this journal is retained by the authors without restriction. By appearing in this Open-Access journal, articles are free to use, with proper attribution, in educational and other non-commercial settings.



ISSN: 2736-3996

Practices in Research Journal
Rue des Palais 153 - 1030 Brussels
T. +32 (0)2 244 44 36
info@architectureinpractice.eu
www.architectureinpractice.eu/pirjournal

In Practice explores the multiple ways in which architects can engage their professional practice in academic research and reciprocally. *In Practice* seeks to open a space for architecture practices in research through the development of methodologies, conferences and publications.



In Practice

